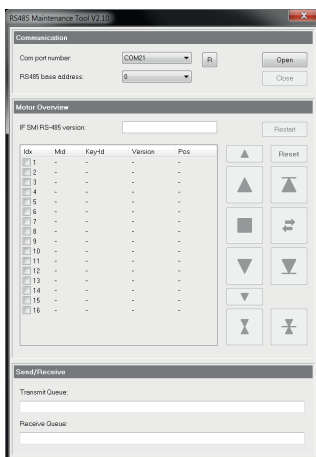




## DOCUMENTATION

### IF SMI RS485 DIN MAINTENANCE TOOL V2.10

#### IF SMI RS485 DIN MAINTENANCE TOOL V2.10



Documentnumber: 85900628 A1

This document describes the "IF SMI RS-485 DIN" Maintenance Tool V2.10 software.

Read the manual before starting the installation.  
Failure to follow the instructions may result in defects that are not covered by the warranty. Errors and technical changes excepted.



Manual EN



Manual NL

## CONTENT

■ Preface	2	■ How to use	3
■ Installation	2	■ Wiring Diagram	7
■ Mode selection (Comm.-Protocol / Modbus Protocol)	2		

## SUPPORT/CONTACT

Vestamatic International GmbH  
 Am Tannenbaum 2 | 41066 Mönchengladbach  
 E-Mail: [info@vestamatic.com](mailto:info@vestamatic.com)

## PREFACE

This document describes the “IF SMI RS-485 DIN” Maintenance Tool V2.10 software.

## INSTALLATION

The software is distributed as a ZIP file. The ZIP file need to be extracted to your local hard drive before usage.



RS485 DIN Maint Tool V2.10.exe

The “IF SMI RS-485 DIN” Maintenance software can by started be double clicking on the executable file.

## MODE SELECTION (COMM.-PROTOCOL / MODBUS PROTOCOL)

**TO USE THE MAINTENANCE TOOL, ENSURE THAT THE RS485 COMMUNICATION PROTOCOL P0 IS SELECTED.**

The default mode is P1 (Modbus protocol).

### MODE SELECTION (COMM.-PROTOCOL / MODBUS PROTOCOL)

The IF SMI RS 485 supports two operating modes on the RS485 interface:

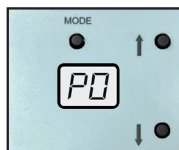
- Type 1: Set to **P1** for **MODBUS RTU** protocol
- Type 2: Set to **P0** for **RS485** communication protocol

Both protocol variants are integrated. **THE DESIRED MODE CAN ONLY BE SELECTED, AND THE CURRENT MODE DISPLAYED, DURING STARTUP.** After changing the mode, the IF SMI RS 485 restarts automatically to

## MODE SELECTION (COMM.-PROTOCOL / MODBUS PROTOCOL)

### DISPLAY CURRENT MODE

When switching on: Mode x 6s

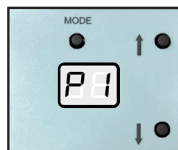


- P0 = RS485 Communicationsprotocol
- P1 = Modbus protocol

The display shows the current mode.

### SWITCH TO MODE TYPE 1 – P1

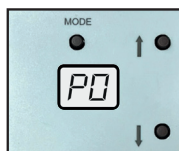
When switching on: Mode + DOWN x 6s



Display shows = P1  
Modbus protocol

### SWITCH TO MODE TYPE 2 – P0

When switching on: Mode + UP x 6s



Display shows = P0 RS485  
communication protocol

## HOW TO USE

### COM PORT NUMBER

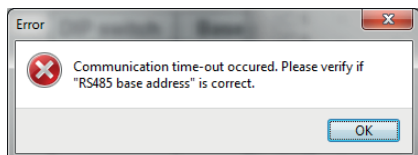
Select the communication port, where your RS-485 interface is located. When your communication port is not listed, you can press the [R] button to refresh the list.

### RS485 BASE ADDRESS

Select the correct base address of your "IF SMI RS-485 DIN" gateway.

### OPEN THE COMMUNICATION

By pressing the [Open] button, the selected communication port will be opened. The maintenance software tries to communicate with the IF SMI RS-485 DIN gateway. When something goes wrong, following dialog will appear:



## HOW TO USE

RS485 Maintenance Tool V2.10

X

**Communication**

Com port number:
COM21
R
Open

RS485 base address:
0
Close

**Motor Overview**

IF SMI RS-485 version:
Restart

Idx	Mid	Key-Id	Version	Pos
<input type="checkbox"/> 1	-	-	-	-
<input type="checkbox"/> 2	-	-	-	-
<input type="checkbox"/> 3	-	-	-	-
<input type="checkbox"/> 4	-	-	-	-
<input type="checkbox"/> 5	-	-	-	-
<input type="checkbox"/> 6	-	-	-	-
<input type="checkbox"/> 7	-	-	-	-
<input type="checkbox"/> 8	-	-	-	-
<input type="checkbox"/> 9	-	-	-	-
<input type="checkbox"/> 10	-	-	-	-
<input type="checkbox"/> 11	-	-	-	-
<input type="checkbox"/> 12	-	-	-	-
<input type="checkbox"/> 13	-	-	-	-
<input type="checkbox"/> 14	-	-	-	-
<input type="checkbox"/> 15	-	-	-	-
<input type="checkbox"/> 16	-	-	-	-

▲

▲

■

▼

▼

⌵

⌵

Reset

⏮

⏭

⏪

⏩

⏴

⏵

**Send/Receive**

Transmit Queue:

Receive Queue:

## HOW TO USE

### IF SMI RS-485 VERSION

When the communication is established, the software version of the IF SMI RS-485 gateway is checked:

#### Software version is not supported

Motor Overview	
IF SMI RS-485 version:	V2.0C (not supported)

This version of IF SMI RS-485 gateway cannot be used with this version of PC tool.

#### Software version is supported

Motor Overview	
IF SMI RS-485 version:	V3.0 (supported)

This version of IF SMI RS-485 gateway is supported.

### MOTOR OVERVIEW










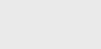


The motor overview shows the attached SMI motors of the IF SMI RS-485 gateway: checked:

Mid = Manufacturer ID (6 = Vestamatic GmbH, 18 = Vestamatic International GmbH)

Key-Id = Motor serial number, also known as Key-ID.

Version = Motor software version. This is only shown for Vestamatic SMI motors Pos = Current motor position

Idx	Mid	Key-Id	Version	Pos
<input type="checkbox"/> 1	18	5466C2DC	-	1,5%
<input checked="" type="checkbox"/> 2	6	12345678	V0.1.0.6	0,0%
<input type="checkbox"/> 3	-	-	-	-
<input type="checkbox"/> 4	-	-	-	-
<input type="checkbox"/> 5	-	-	-	-
<input type="checkbox"/> 6	-	-	-	-
<input type="checkbox"/> 7	-	-	-	-
<input type="checkbox"/> 8	-	-	-	-
<input type="checkbox"/> 9	-	-	-	-
<input type="checkbox"/> 10	-	-	-	-
<input type="checkbox"/> 11	-	-	-	-
<input type="checkbox"/> 12	-	-	-	-
<input type="checkbox"/> 13	-	-	-	-
<input type="checkbox"/> 14	-	-	-	-

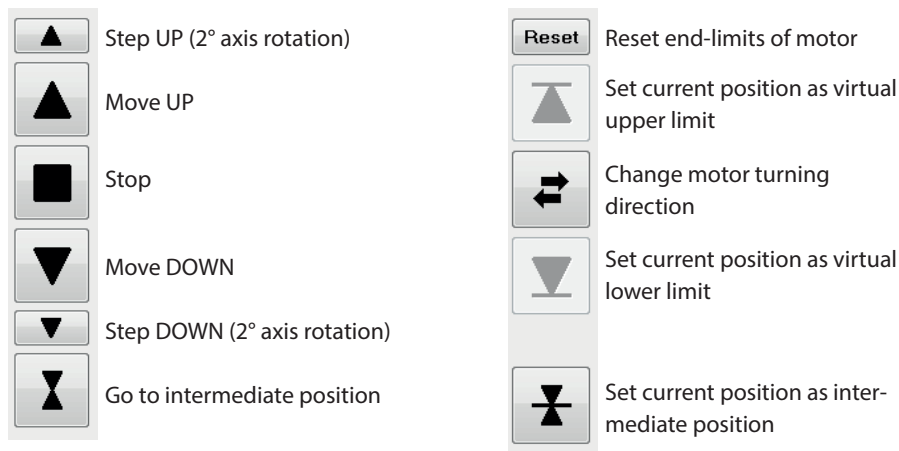













## HOW TO USE

### MOTOR OPERATE

To operate a single motor, or to make changes to the limits (only available for Vestamatic motors), the checkbox to the left must be selected. When selected, the operate buttons and – in case of a Vestamatic motor – the modify buttons become active.

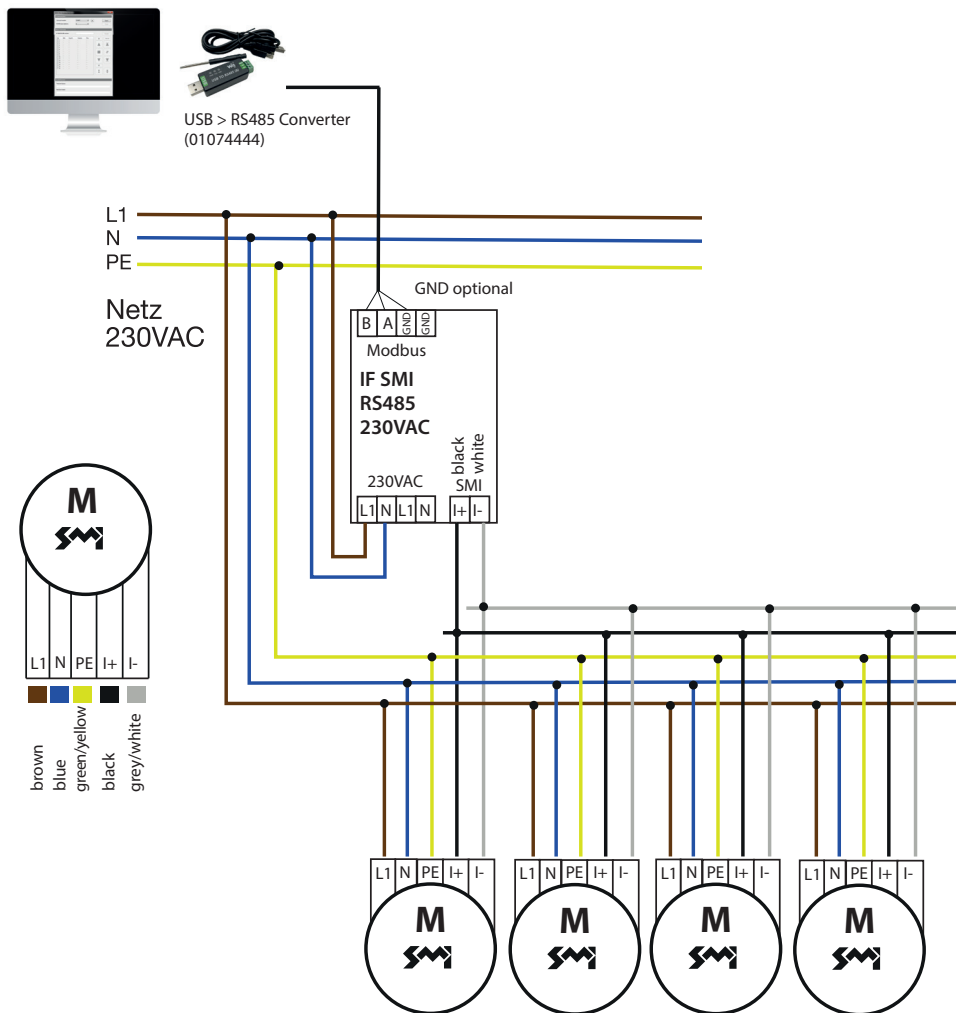
When hovering with your mouse above the buttons, a Hint text will appear



- The [Step UP] and [Step DOWN] buttons can be helpful when setting the end-limits at an exact position.
- When pressing [Reset], a confirmation dialog pops-up. This to prevent accidental deletion of end-limits.
- Change motor turning direction is only possible when no limits are set.

# WIRING DIAGRAM

## IF SMI RS485 230 VAC



# WIRING DIAGRAM

## IF SMI RS485 24VDC

